

# MODEL 192CDLRC MEDIUM DUTY CHAIN DRIVEN LIVE ROLLER CURVE



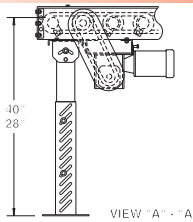
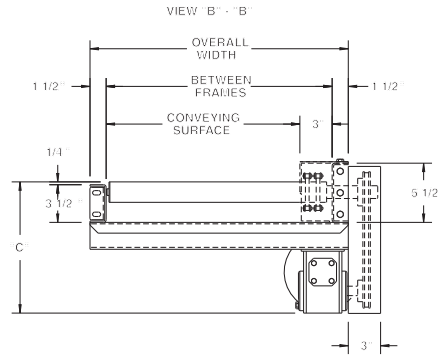
Conveyor shown with optional supports

Roach 192CDLRC is a medium duty chain driven live roller curve, designed to transport medium duty loads such as castings or drums. **NOTE:** When conveying medium duty pallet loads, use model 254TCDLRC, opposite page, to maintain product orientation.

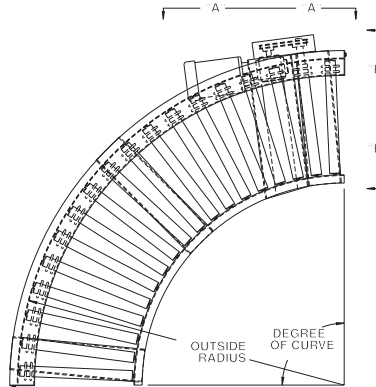
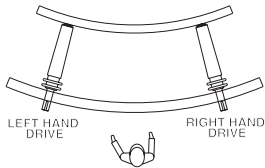
**SPECIFY MODEL NUMBER PER EXAMPLE**

**192CDLRC-27-45-L**

192CDLRC-(between frames)-(degree)-(left or right)



DETERMINING DRIVE LOCATION



## SPECIFICATIONS

**TREAD ROLLERS:** 1.9" dia. x 12 ga. steel, model 192S with sprockets.\*

**CHAIN DRIVE:** Roller to roller with No. 40 circular roller chain.

**END DRIVE:** Reversible drive either side mounted or underside (specify). Main drive roller is supported by precision, heavy duty, lubricated, ball bearing units.

**CHAIN GUARD:** Chain drive is enclosed, top and bottom, along entire length of conveyor.

**BED:** 5-1/2" x 1-1/2" x 10 ga. and 3-1/2" x 1-1/2" x 10 ga. formed steel channel frame.

**BEARINGS:** Removable type, heavy duty bearings, zinc plated, grease packed, labyrinth sealed.

**MOTOR DRIVE:** 1/3 HP, 230/460/3, 60 cycle, ODP right angle gear motor.

**SPEED:** 45 FPM, constant.

**DRIVE LOCATION:** Drive located on outside of curve. Specify right hand drive or left hand drive (drive hand determined with reference point located at outside of curve).

**ROLLER CENTERS:** 5" RC measured at outside radius of curve.

**ELECTRICAL CONTROLS:** Optional.

HP @ 45 FPM	"C"
1/3, 1/2	13-1/8"
3/4	13-1/2"
1	13-3/4"
1-1/2	14-7/8"
2	15-1/2"

UNIT		90°	45°
BF	CONV. SURFACE	QTY. RLS.	WT. (lbs.)
15"	12"	4'-10-3/4"	18 339
21"	18"	4'-10-3/4"	18 374
27"	24"	4'-10-3/4"	18 409
33"	30"	8'-15/16"	30 543
39"	36"	8'-15/16"	30 586
45"	42"	8'-15/16"	30 633
51"	48"	8'-15/16"	30 681

## OPTIONAL EQUIPMENT

**SPEED:** Constant speed 1.5-60 FPM; DC variable speed; AC inverter variable speed. Other constant or variable speeds available.

**NOTE: CAPACITY CHANGES WITH SPEED. 100 FPM MAX. WITH ROLLER-TO-ROLLER CHAIN DRIVE.**

**MOTORS:** Available through 3 HP in TEFC, explosion proof, dirty duty, 115/230/1, 575/3, etc.

**FLOOR SUPPORTS:** Supports, knee braces, casters, ceiling hangers and polytite supports available. See Conveyor Accessories.

**ELECTRICAL CONTROLS:** Magnetic or manual starter; limit switch; others available.

\*NOTE: Orientation of product may be affected because of straight rollers in curve. To maintain orientation, use tapered roller curve.

■ 4 week shipment

