

# MODEL 297CDLRC HEAVY DUTY CHAIN DRIVEN LIVE ROLLER CURVE



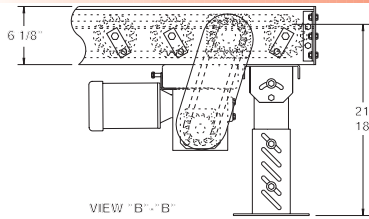
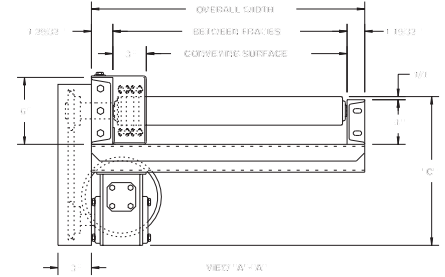
Conveyor shown with optional supports

Model 297CDLRC features structural steel channel frames for conveying heavy unit loads. Heavy castings, drums and numerous other loads not requiring product orientation may be transported on this heavy duty chain driven live roller curve.

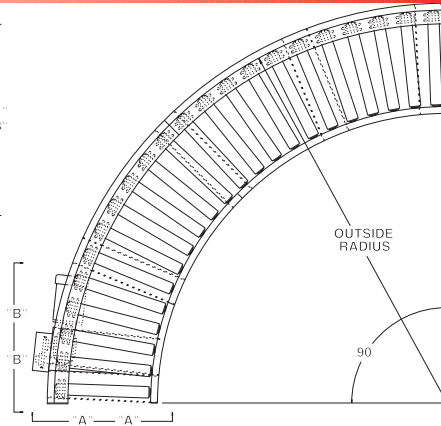
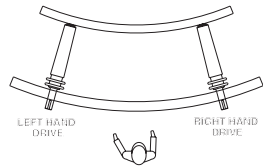
SPECIFY MODEL NUMBER PER EXAMPLE

**297CDLRC-57-45-R**

297CDLRC-(between frames)-(degree)-(left or right)



VIEW "B"- "B"



UNIT		90°		45°		
BF	CONV. SURFACE	OUTSIDE RADIUS	QTY. RLRs.	WT. (lbs.)	QTY. RLRs.	WT. (lbs.)
15"	12"	7'-1-1/2"	22	695	11	383
21"	18"	7'-1-1/2"	22	768	11	422
27"	24"	7'-1-1/2"	22	836	11	458
33"	30"	7'-1-1/2"	22	895	11	491
39"	36"	7'-1-1/2"	22	962	11	528
45"	42"	10'-3-3/4"	32	1489	16	795
51"	48"	10'-3-3/4"	32	1656	16	880
57"	54"	10'-3-3/4"	32	1831	16	977
63"	60"	10'-3-3/4"	32	2011	16	1074

## SPECIFICATIONS

**TREAD ROLLERS:** 2-9/16" dia. x 7 ga. steel, model 297S with sprockets.\*

**CHAIN DRIVE:** Roller to roller with No. 60 circular roller chain.

**END DRIVE:** Reversible drive, either side mounted or underside (specify). Main drive roller is supported by precision, heavy duty, lubricated, ball bearing units.

**CHAIN GUARD:** Chain drive is enclosed, top and bottom, along entire length of conveyor.

**ROLLER CENTERS:** 6" RC measured at outside radius of curve.

**BED:** 4" at 5.4 lbs. and 6" at 8.2 lbs. structural steel channel frame.

**BEARINGS:** Removable type, heavy duty, ball bearings, zinc plated, grease packed, labyrinth sealed.

**MOTOR DRIVE:** 3/4 HP, 230/460/3, 60 cycle, ODP right angle gear motor.

**SPEED:** 35 FPM, constant.

**DRIVE LOCATION:** Drive located on outside of curve. Specify right hand drive or left hand drive (drive hand determined with reference point located at outside of curve).

**ELECTRICAL CONTROLS:** Optional.

HP @ 35 FPM	"C"
3/4	13"
1	13-1/4"
1-1/2	14-1/8"
2	15"

## OPTIONAL EQUIPMENT

**BED:** Rollers on 4-1/2" centers on outside radius.

**SPEED:** Constant speed 1.5-60 FPM; DC variable speed; AC inverter variable speed. Other constant or variable speeds available. **NOTE: CAPACITY CHANGES WITH SPEED. 100 FPM MAX. WITH ROLLER-TO-ROLLER CHAIN DRIVE.**

**MOTORS:** Available through 3 HP in TEFC, explosion proof, dirty duty, 115/230/1, 575/3, etc.

**FLOOR SUPPORTS:** Supports, knee braces, casters, and polyturf supports available. See Conveyor Accessories.

\*NOTE: Orientation of product may be affected because of straight rollers in curve. To maintain orientation, use tapered roller curve.



■ 4 week shipment