

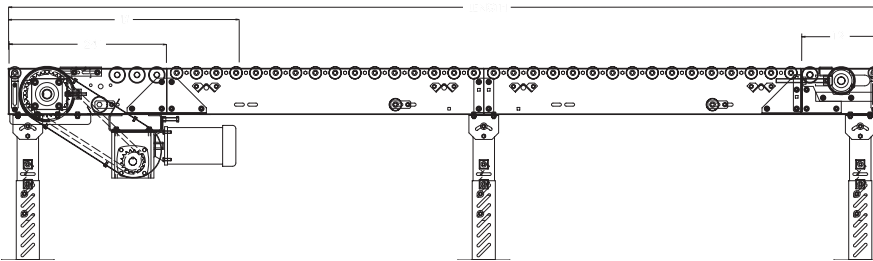
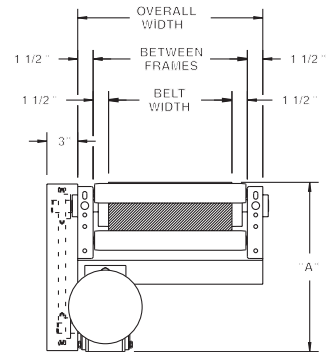
# MODEL 751RB HEAVY DUTY ROLLER BED BELT CONVEYOR

24 HOUR SHIPMENTS INCLUDE ALL 1-FOOT INCREMENTS 5'-0" TO 100'-0"



Conveyor shown with optional supports

Roach 751RB is the choice for heavier unit loads. The heavy duty roller bed construction makes model 751RB ideal for transporting heavy loads with low power requirements.



HP @ 60 FPM	"A" MAX 8" DRV.	"B" MAX 8" DRV.
	1	17-1/4"
1-1/2	18-1/8"	37-3/32"
2	19"	38-3/32"
3	19-1/2"	39-9/32"

## SPECIFICATIONS

**BELTING:** PVC-120 black.

**CARRIER ROLLERS:** 2-1/2" dia. x 11 ga. steel, model 251S.

**DRIVE PULLEY:** 8" dia. with 1-7/16" dia. shaft on 15"-39" BF; 12" dia. with 1-15/16" dia. shaft above 39" BF; both machine crowned and fully lagged.

**TAIL PULLEY:** 4" dia. with 1-3/16" dia. shaft on 15"-39" BF; 6" dia. with 1-7/16" dia. shaft above 39" BF; both machine crowned.

**RETURN ROLLERS:** 1.9" dia. x 16 ga. steel, model 196S, adjustable.

**BELT SPEED:** 35 FPM, constant.

**END DRIVE:** Allows one-direction (unit) operation; add optional center drive for reversible application.

**TAKE-UP:** Screw type unit at tail pulley provides 12" belt take-up.

**BEARINGS:** All pulley bearings are precision, heavy duty, lubricated, ball bearing units with cast iron housings.

**BED:** 7" x 1-1/2" x 10 ga. channel frame. Bed sections attach with couplings and floor supports.

**SAFETY POP-OUT ROLLERS:** Standard on both ends, 1.9" x 12 ga. steel, model 192S on 15"-39" BF, 1.9" x 9 ga. steel, model 199S on 45"-57" BF.

**SQUARING RODS:** Adjustable rods on underside of bed allow frame to be squared for improved belt tracking and are standard on all units over 30'.

**ROLLER CHAIN:** Drive pulley is driven by No. 50 roller chain for 1-1/2 HP or less and No. 60 chain on larger drives. Chain take-up provided on motor base.

**MOTOR DRIVE:** 1 HP, 230/460/3, 60 cycle, ODP right angle gear motor.

**ELECTRICAL CONTROLS:** Optional.

### ⚠ WARNING

Prevent pinch points that exist when belt conveyors are permanently attached to other conveyors or equipment!



■ 24 hour shipment    ■ 3 week shipment

## SPECIFICATION TABLE

CONVEYOR LENGTH			5'	10'	15'	20'	25'	30'	40'	50'	60'	70'	80'	90'	100'
BF	OAW	BELT	Unit weights (lbs.) with 3" roller centers (For other centers, deduct weights below)												
15"	18"	12"	508	659	897	1101	1340	1543	1985	2427	2869	3311	3753	4195	4638
21"	24"	18"	532	760	1041	1283	1564	1806	2329	2852	3375	3898	4421	4944	5468
27"	30"	24"	613	907	1180	1558	1901	2209	2860	3511	4162	4813	5464	6115	6767
33"	36"	30"	N/A	1027	1421	1785	2179	2543	3297	4059	4817	5575	6333	7091	7850
39"	42"	36"	N/A	1142	1596	2007	2459	2872	3737	4602	5467	6332	7197	8062	8928
45"	48"	42"	N/A	1292	1830	2318	2856	3344	4370	5401	6422	7448	8474	9500	10527
51"	54"	48"	N/A	1442	2064	2631	3253	3820	5009	6198	7387	8576	9765	10954	12144
57"	60"	54"	N/A	1592	2298	2944	3650	4296	5648	6995	8352	9704	11056	12408	13761

Deduct the following weights (lbs.) for other than 3" centers

ROLLER CENTERS	15" BF	21" BF	27" BF	33" BF	39" BF	45" BF	51" BF	57" BF
	Per 10'	Per 10'	Per 10'	Per 10'	Per 10'	Per 10'	Per 10'	Per 10'
4-1/2"	-72	-90	-112	-136	-158	-178	-200	-220
6"	-144	-180	-224	-272	-316	-356	-400	-440
9"	-186	-234	-300	-354	-410	-464	-518	-572
12"	-216	-270	-336	-408	-474	-534	-600	-660

## OPTIONAL EQUIPMENT

**BELTING:** Black PVC ruff-top; 3-ply brown neoprene ruff-top; PVC-120 white food grade COS; PVC-150 black COS; 3-ply CN 40 urethane cover. Consult factory for other belting.

**CENTER DRIVE:** Reversible drive with integral belt take-up of 24". Specify location. Center drive option available on units 6'-0" long and above.

**SIDE MOUNTED END DRIVE:** Provides minimum conveyor height of 12" TOB (8" dia. drive pulley); 16" TOB (12" dia. drive pulley).

**OVERHEAD END DRIVE:** Provides minimum conveyor height of 12" TOB (8" dia. drive pulley); 16" TOB (12" dia. drive pulley).

**AUXILIARY TAKE-UP:** Provides 24" of belt take-up. Specify location. See Power Accessories.

**FLOOR SUPPORTS:** Supports, knee braces, casters and polytier supports available. See Conveyor Accessories.

**GUARD RAILS:** HFSG in 2", 4" and 6" heights; 1-1/2" angle (model HGA1-1/2). See Conveyor Accessories.

**NOSE-OVER:** Provides smooth transition from incline to horizontal position. Consult factory.

**SIDE TABLES:** Available in 9", 15" and 21" widths. Consult factory.

**BELT SPEED:** Constant speed 12-120 FPM; DC variable speed; AC inverter variable speed. Other constant or variable speeds available. **NOTE: CAPACITY CHANGES WITH SPEED.**

**CEILING HANGERS:** Heavy duty with hardware to attach rods to conveyor. Consult factory.

**MOTORS:** Available through 3 HP in TEFC, explosion proof, dirty duty, brake motor, 115/230/1, 575/3, etc.

**ELECTRICAL CONTROLS:** Magnetic starter (one direction or reversible); One direction manual starter; Momentary start/stop push button station; Forward/reversing /stop push button station. Mounting and pre-wiring for units up to 12' long.

