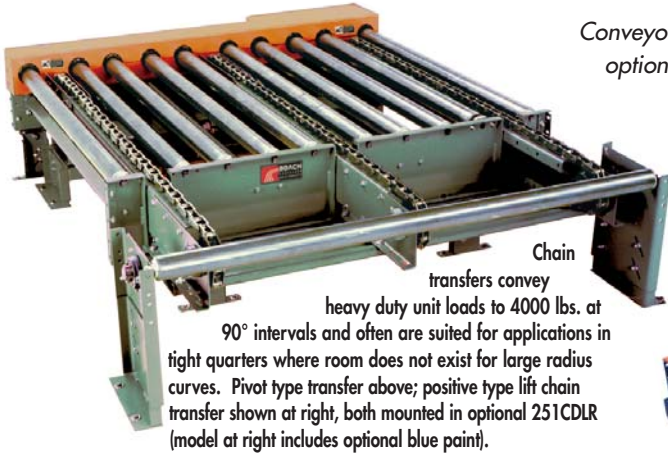
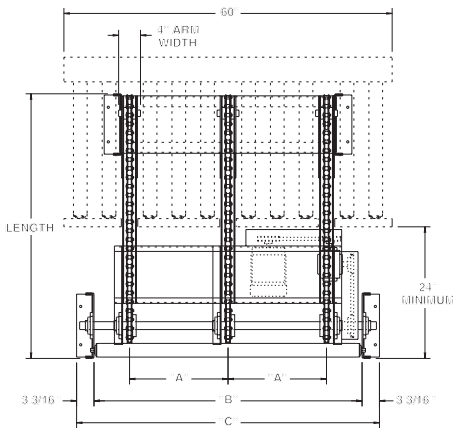
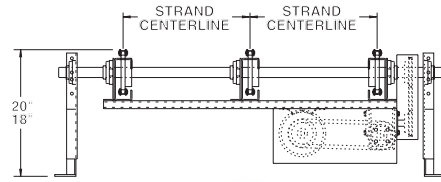


MODEL CT380/CT360 90° 3-STRAND CHAIN TRANSFER



Conveyors shown with optional supports

■ 4 week shipment



SPECIFICATIONS

TRANSFER ARM: 7 ga. formed channel.

TRANSFER CHAIN: No. 80 (model CT380) or no. 60 (model CT360) riveted roller chain.

STANDARD LENGTHS: 3', 4', 5', 6', 7' and 8' unit lengths.

CHAIN CENTERS: 18"

CHAIN TAKE-UP: Screw Type.

END DRIVE: Allows one-direction (unit) operation; add optional center drive for reversible application.

LIFT: Pivot type.

BEARINGS: Heavy duty, lubricated, ball bearing unit with cast iron housings.

CHAIN SPEED: 35 FPM constant.

MOTOR DRIVE: 1/2 HP, 230/460/3, 60 cycle, ODP right angle gear motor.

CAPACITY: 4000 lbs.

AIR CONTROLS: Air bag(s) with single solenoid valve. (60-80) psi required.

CUTOUTS: Required through conveyor frame transfer mounts in when using end drive; may be required by application for center drive transfers also.

ELECTRICAL CONTROLS: Optional.

MODEL CT360/CT380 WTS. (lbs.)				
LENGTH	END DRIVE - PIVOT LIFT		CENTER DRIVE - PIVOT LIFT	
	CT360	CT380	CT360	CT380
3'	398	410	433	451
4'	444	460	479	501
5'	490	510	525	551
6'	536	560	571	601
7'	584	612	619	653
8'	631	663	665	704

OPTIONAL EQUIPMENT

STRANDS: 2, 4 or more.

POSITIVE LIFT: Allows reversible drive and decreased overall length.

FRL: Filter, regulator, lubricator with 3/8" ports.

FLOOR SUPPORTS: See Conveyor Accessories for various elevations and types.

CHAIN CENTER: 12", 24" or as required by application.

CHAIN SPEED: 35-120 FPM, constant speed (specify). Other constant or variable speed available. **NOTE: CAPACITY CHANGES WITH SPEED.**

MOTORS: Available through 2 HP in TEFC, explosion proof, dirty duty, 115/230/1, 575/3, etc.

ELECTRICAL CONTROLS: Optional.

"A"	"B"	"C"
12"	37"	43-3/8"
18"	49"	55-3/8"
24"	61"	67-3/8"

