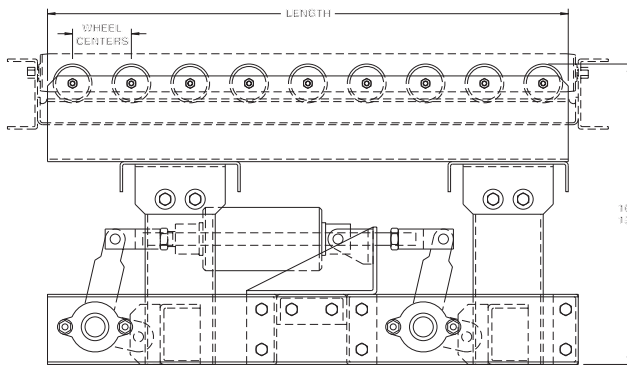
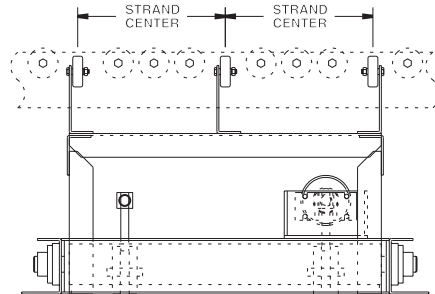


MODEL WT3 90° 3-STRAND SKATE WHEEL TRANSFER



Shown mounted in optional conveyor



LENGTH	WT. (lbs.)	LENGTH	WT. (lbs.)
2'	375	4'	440
3'	395	5'	485

SPECIFICATIONS

TRANSFER ARM: 7 ga. formed channel.

TRANSFER WHEELS: Frantz model 35Z on 3" wheel centers. Wheels are rated at 50 lbs. capacity each.

STANDARD LENGTHS: 2', 3', 4', and 5'.

STRAND CENTERS: 18"

LIFT: Positive type lift with 1" of net lift.

BEARINGS: Heavy duty, lubricated, ball bearing unit with cast iron housings.

MOUNTING: Integral part of unit, with 15" top of wheel elevation (down position). Unit designed to mount between conveyor frames.

CAPACITY: Unit load not to exceed 500 lbs.

AIR CONTROLS: Air cylinder (double action) with single solenoid valve. (60-80 PSI required)

OPTIONAL EQUIPMENT

STRANDS: 2, 4 or more.

LIFT: Pivot type - allows product to gravity flow from transfer unit.

3" POSITIVE LIFT: Provides greater clearance for transfer.

STRAND CENTER: 12", 24" or as required by application.

SOLENOID: Double solenoid valve.

FLOOR SUPPORTS: Adjustable to provide greater elevation for transferring onto spur lines.

CENTERS: 1-1/2" wheel centers.

ELECTRICAL CONTROLS: Numerous controls available depending on application. Consult factory.

CONVEYOR SECTION: Optional. Transfer mounts into medium and heavy duty gravity conveyors.

